



panda 3.0 Mini 2

460W

MAXIMUM MODULE EFFICIENCY

23.0%

POSITIVE POWER TOLERANCE

0~+5_w



N-type TOPCon Bifacial Module

**IMPROVED POWER
NEVER SETTLE FOR LESS**

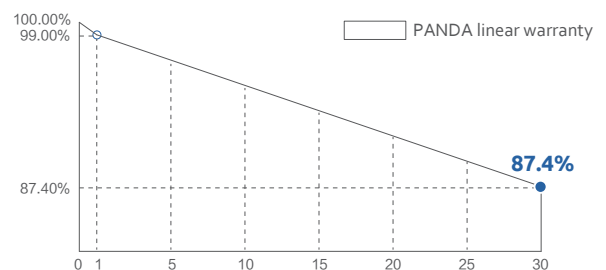
- Backside Yield
- Wide Applications
- Superior Yield
- Outstanding Bifaciality
- Excellent Durability



Yingli Solar Website

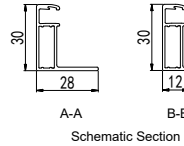
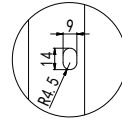
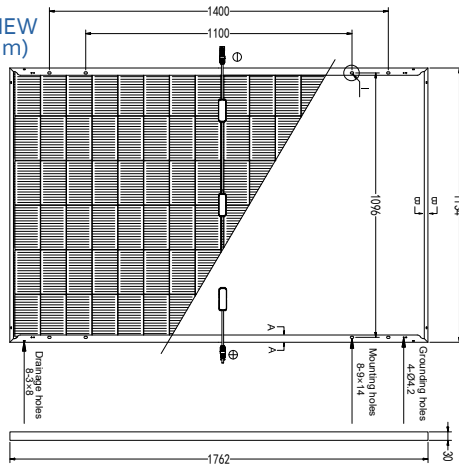
QUALIFICATIONS & CERTIFICATES

- IEC 61215, IEC 61730, CE
- ISO 9001: Quality management systems
- ISO 14001: Environmental management systems
- IEC 62941: Quality system for PV module manufacturing
- ISO 45001: Occupational health and safety management systems

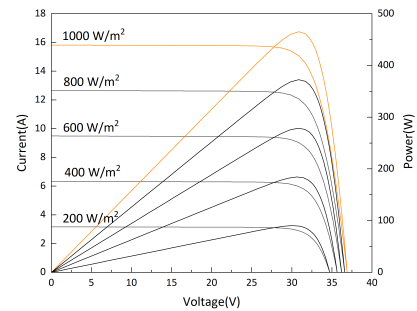


1.00% the 1st year power degradation
0.40% annual power degradation

BACK VIEW
(units:mm)



I-V / P-V CURVES



Warning: Read the Installation and User Manual in its entirety before handling, installing and operating Yingli Solar modules.

Electrical Parameters at Standard Test Conditions (STC)

Module type	YLxxxCF48 i/2 (xxx=Pmax)					
Power output*-Pmax (W)	435	440	445	450	455	460
Power output tolerances-ΔPmax (W)	0 / + 5					
Module efficiency-η _m (%)	21.8	22.0	22.3	22.5	22.8	23.0
Voltage at Pmax - V _{mpp} (V)	29.45	29.68	29.91	30.14	30.37	30.60
Current at Pmax-I _{mp} (A)	14.78	14.83	14.88	14.94	14.99	15.04
Open-circuit voltage*-V _{oc} (V)	35.63	35.84	36.05	36.26	36.47	36.68
Short-circuit current*-I _{sc} (A)	15.46	15.52	15.58	15.64	15.70	15.76

STC: 1000 W·m⁻² irradiance, 25°C cell temperature, AM 1.5. *Measuring tolerance: ± 3%.

Electrical Parameters at Nominal Operating Cell Temperature (NOCT)

Power output-Pmax (W)	331	335	338	342	346	350
Voltage at Pmax - V _{mpp} (V)	28.09	28.31	28.53	28.75	28.97	29.19
Current at Pmax-I _{mp} (A)	11.78	11.82	11.86	11.91	11.95	11.99
Open-circuit voltage-V _{oc} (V)	33.83	34.03	34.23	34.43	34.63	34.83
Short-circuit current-I _{sc} (A)	12.46	12.50	12.55	12.60	12.65	12.70

NOCT: open-circuit module operation temperature at 800 W·m⁻² irradiance, 20°C ambient temperature, 1 m · s⁻¹ wind speed.

Bifacial Electrical Parameters at Standard Test Conditions(BNPI)

Power output-Pmax (W)	482	488	493	499	504	510
Voltage at Pmax - V _{mpp} (V)	29.45	29.68	29.91	30.14	30.37	30.60
Current at Pmax-I _{mp} (A)	16.38	16.43	16.49	16.55	16.61	16.66
Open-circuit voltage-V _{oc} (V)	35.63	35.84	36.05	36.26	36.47	36.68
Short-circuit current-I _{sc} (A)	17.13	17.20	17.26	17.33	17.40	17.46

BNPI: 1000W·m⁻² on the front side and 135 W·m⁻² on the back side, 25°C cell temperature, AM 1.5. Bifaciality coefficient is 80% ± 5%.

Thermal Characteristics

Nominal operating cell temperature-NOCT(°C)	42 ± 2
Temperature coefficient of Pmax-γ (% / °C)	- 0.29
Temperature coefficient of Voc-β (% / °C)	- 0.24
Temperature coefficient of I _{sc} -α (% / °C)	0.042

Packaging Specifications

Number of modules per pallet	37
Number of pallets per 40' container	26
Packaging box dimensions (L / W / H)	1790 mm / 1140 mm / 1250 mm
Box weight	820 kg

Construction Materials

Cell (material / quantity)	n-type monocrystalline silicon / 6 x 16
Glass (thickness)	1.6 mm / 1.6 mm
Frame (material)	anodized aluminum alloy
Junction box (type / protection degree)	3 bypass diodes / ≥ IP68
Cable (length / cross-sectional area)	± 1200 mm / 4 mm ²

• Due to continuous innovation, research and product improvement, the specifications in this product information sheet are subject to change without prior notice.
 • The specifications may deviate slightly and are not guaranteed.
 • The data do not refer to a single module and they are not part of the offer, they only serve for comparison to different module types.

Operating Conditions

Max. system voltage	1500 V _{dc}
Max. series fuse rating*	30 A
Operating temperature range	- 40°C~ 85°C
Max. static load, front (e.g., snow)	5400 Pa
Max. static load, back (e.g., wind)	2400 Pa
Max. hailstone impact (diameter / velocity)	25 mm / 23 m·s ⁻¹

*Do not connect fuse in combiner box with two or more strings in parallel connection.

General Characteristics

Dimensions (L / W / H)	1762 mm / 1134 mm / 30 mm
Weight	21.0 kg



Yingli Solar Website