



11<sup>th</sup> July 2023

**Subject: Approval for Yingli module compatibility with Jurchen PEG Mounting structure**

To whom it may concern,

This letter is to approve the use of the Yingli modules listed below with the **HL (High-Load) design** Jurchen Technology PEG mounting structure as described in the Appendixes and its compliance with the Yingli standard installation manual.

<b>Max test loads</b>	<b>PANDA 3.0 PRO: YLxxxC-38e 1/2 , YLxxxC-38e 1500V 1/2, YLxxxCF72 e/2, YLxxxCF78 e/2</b>	
	<b>Downward load (Pressure)</b>	<b>Upward load (Suction)</b>
<b>High-Load <u>Snow</u> PEG 4x short side clamping + 2x long side <u>support</u> as shown in <b>Appendix C</b></b>	+1600Pa	-1520Pa
<b>High-Load <u>Wind</u> PEG 4x short side clamping + 2x long side <u>clamping</u> as shown in <b>Appendix D</b></b>	+1600Pa	-1600Pa

The loads mentioned above are the maximum allowed, the Test loads. In case 1.5 security factor or higher is included in the design load calculation according to the relevant building code, the Design load is equal to the Test load, otherwise 1.5 security factor must be included:

[Test load] = 1.5 x [Design load].

The PV modules installed using this installation method are covered by Yingli standard warranty as agreed in the purchase agreement.

Yingli warranty will not be valid in case the modules are damaged due to the installations not in accordance to Yingli instructions, mechanical load or other problem related to the supporting system.

Sincerely,



Yingli Technical Service Department

Name: Chao Ma

Signature:



### Center and Edge Clamps

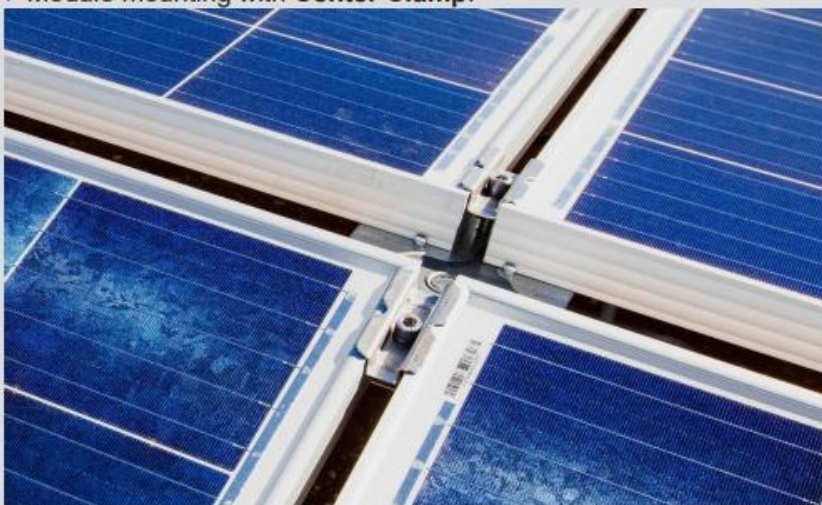
The clamps shown in the photos below are applicable for all mounting methods described in this document.

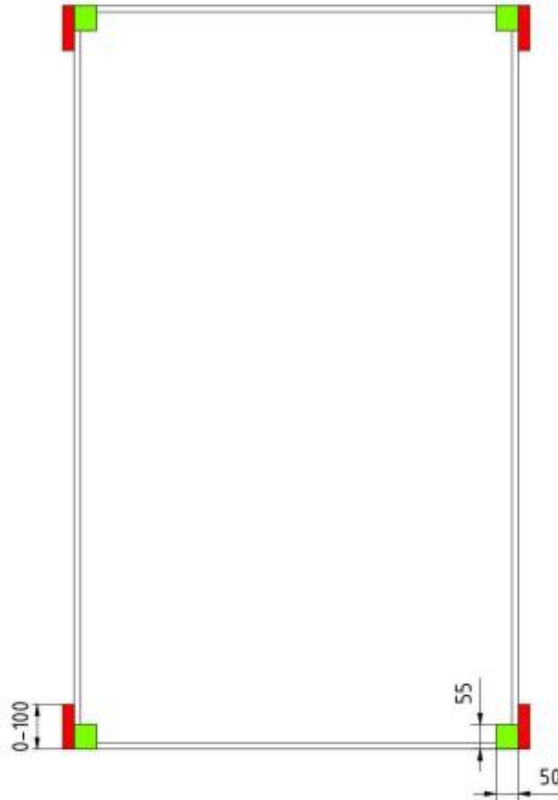




▶ Module mounting with **Edge Clamp**: At the North and South edges of the PEG block



▶ Module mounting with **Center Clamp**:





	The contact surface <b>of the module clamps on the modules</b> Distance from corner: 100mm Clip length: 70mm
	The contact surface <b>of the modules on the plates</b>

## Appendix C

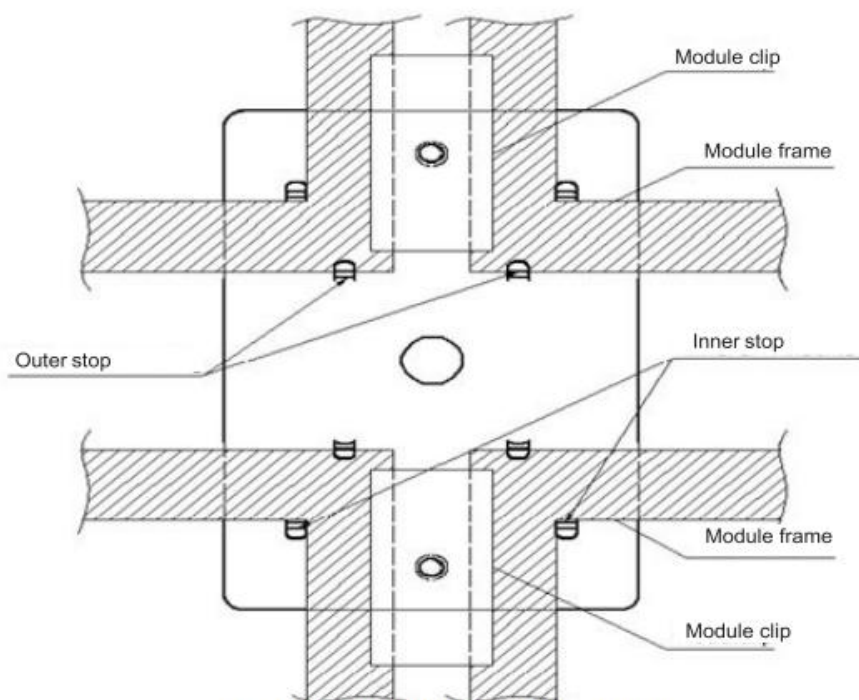
### High-Load Snow PEG with 4 x short side clamping + 2 x long side support (without clamps)



# Module mounting method for JT PEG HL (High load) Snow design

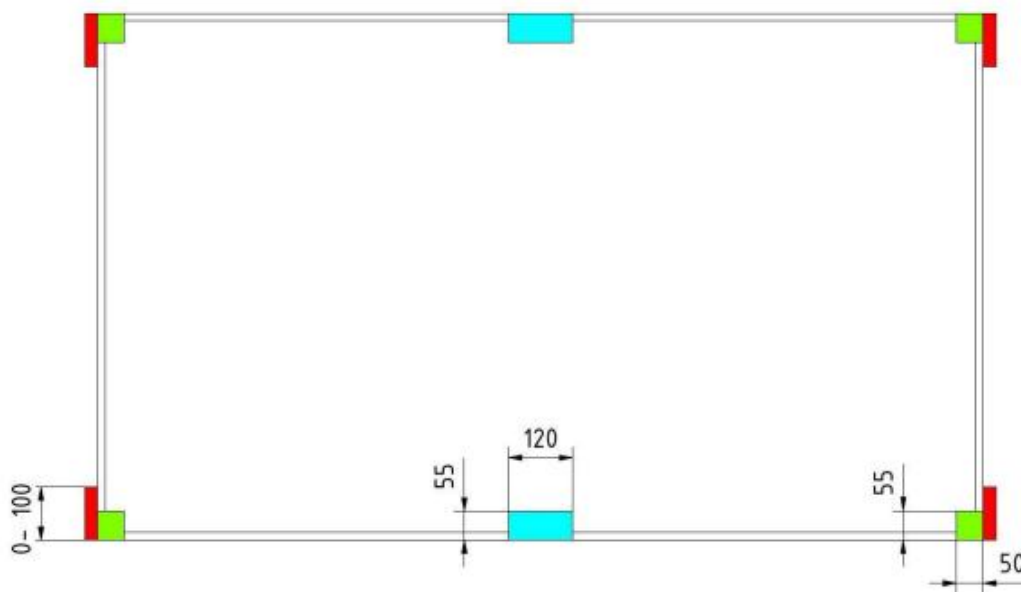
This document describes the **modules mounting method** required on the **HL (High Load) design** of the **PEG EW and SD system**




- ▶ The modules are laid **at 8 deg tilt on 6 plates** of the PEG system, **4 plates located under the corners** of the modules and **2 plates located at the middle of the long edges** of the modules
- ▶ The modules are laid in **landscape orientation**, with the direction of the slope along the module's width
- ▶ The **clamps are connected along the short edges** of the modules and **close to the corners**, as shown in the drawings and photos included in this document
- ▶ There are **4 clamps, connected near the corners of the module**



**Modules Mounting Layout (Top View)**





	The contact surface <b>of the module clamps on the modules</b> Distance from corner: 100mm Clip length: 70mm
	The contact surface <b>of the modules on the plates</b>
	Additional support for the module <b><u>without clamping</u></b> , to withstand high downward pressure. Length = 120mm, width = 55mm

## Appendix D

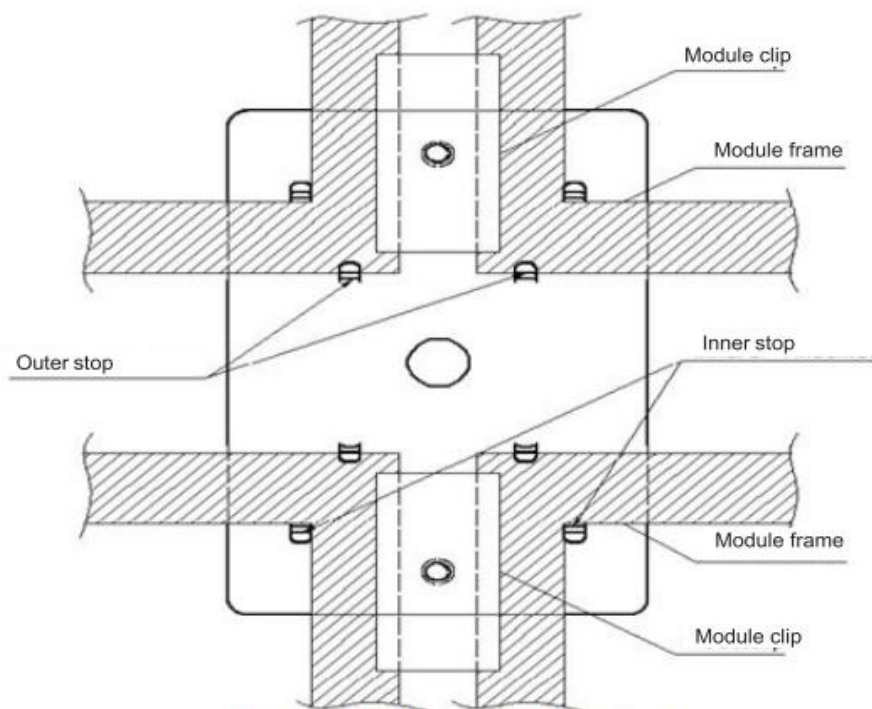
### High-Load Wind PEG with 4 x short side clamping + 2 x long side clamping



# Module mounting method for JT PEG HL (High load) Wind design

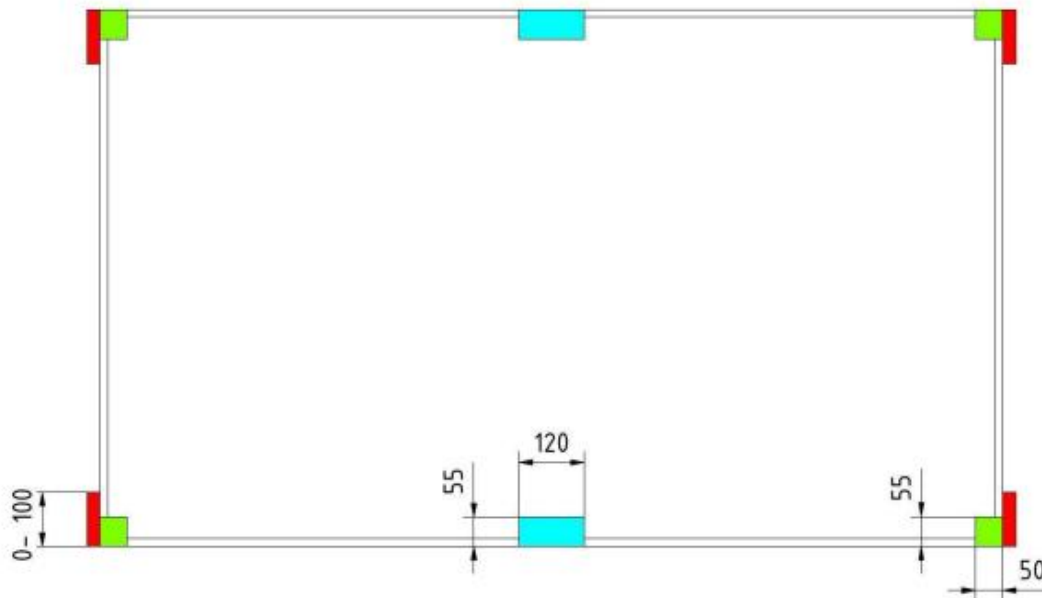
This document describes the **modules mounting method** required on the **HL (High Load) design** of the **PEG EW and SD system**




- ▶ The modules are laid **at 8 deg tilt on 6 plates** of the PEG system, **4 plates located under the corners** of the modules and **2 plates located at the middle of the long edges** of the modules
- ▶ The modules are laid in **landscape orientation**, with the direction of the slope along the module's width
- ▶ The **clamps are connected along the short edges** of the modules and **close to the corners**, as shown in the drawings and photos included in this document
- ▶ There are **6 clamps: 4 connected near the corners of the module and 2 connected at the center of the two long edges**



Modules Mounting Layout (Top View)





	<p>The contact surface <b>of the module clamps on the modules</b>                  Distance from corner: 100mm                  Clip length: 70mm</p>
	<p>The contact surface <b>of the modules on the plates</b></p>
	<p>Additional support for the module <b>with clamping</b>, to withstand high downward <b>and</b> upward pressure.                  Bearing surface: length = 120 mm, width = 55 mm                  Clamping surface: length = 35 mm, width = 11,5 mm</p>

