



Yingli Energy Development (Tianjin) Co., Ltd.
英利能源发展有限公司
3399 North Chaoyang Avenue
Baoding 071051, China
中国保定国家高新区朝阳北大街 3399 号 (071051)

20th September 2024

Subject: Approval for Yingli module compatibility with Jurchen PEG Mounting structure

To whom it may concern,

This letter is to approve the use of the Yingli modules listed below with the **standard design (landscape and portrait)** of the Jurchen Technology PEG mounting structure as described in the Appendixes and its compliance with the Yingli standard installation manual.

Max test loads	PANDA 3.0 PRO: YLxxxCF48 i/2	
	Downward load (Pressure)	Upward load (Suction)
Standard PEG 4x short side clamping (Landscape orientation) as shown in Appendix A	+1800 Pa	-1800 Pa
Standard PEG 4x long side clamping (Portrait orientation) as shown in Appendix B	+1800 Pa	-1800 Pa

The loads mentioned above are the maximum allowed, the Test loads. In case 1.5 security factor or higher is included in the design load calculation according to the relevant building code, the Design load is equal to the Test load, otherwise 1.5 security factor must be included:

[Test load] = 1.5 x [Design load].

The PV modules installed using this installation method are covered by Yingli standard warranty as agreed in the purchase agreement.

Yingli warranty will not be valid in case the modules are damaged due to the installations not in accordance to Yingli instructions, mechanical load or other problem related to the supporting system.

Sincerely,

Yingli Technical Service Department

Name: Chao Ma

Signature:



Yingli Energy Development (Tianjin) Co., Ltd.
英利能源发展有限公司
3399 North Chaoyang Avenue
Baoding 071051, China
中国保定国家高新区朝阳北大街 3399 号 (071051)

Center and Edge Clamps

The clamps shown in the photos below are applicable for all mounting methods described in this document.



▶ **Module mounting with Edge Clamp: At the North and South edges of the PEG block**



▶ **Module mounting with Center Clamp:**



Appendix A

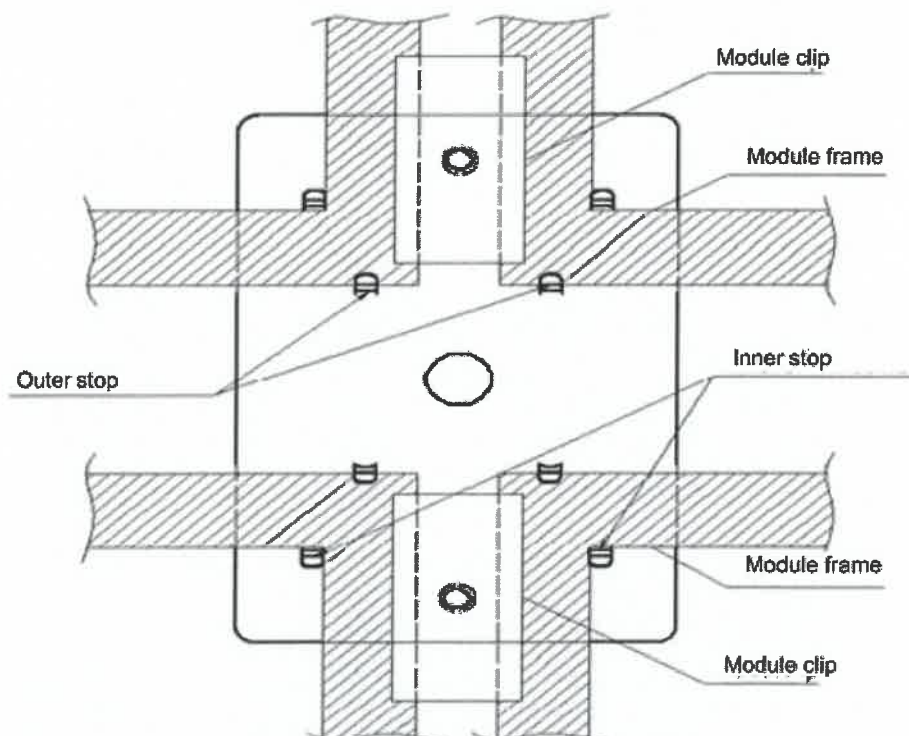
Standard PEG 4 x short side clamping (Landscape orientation)



Module mounting method for JT PEG standard design

This document describes the modules mounting method required on the standard design of the PEG EW and SD system.

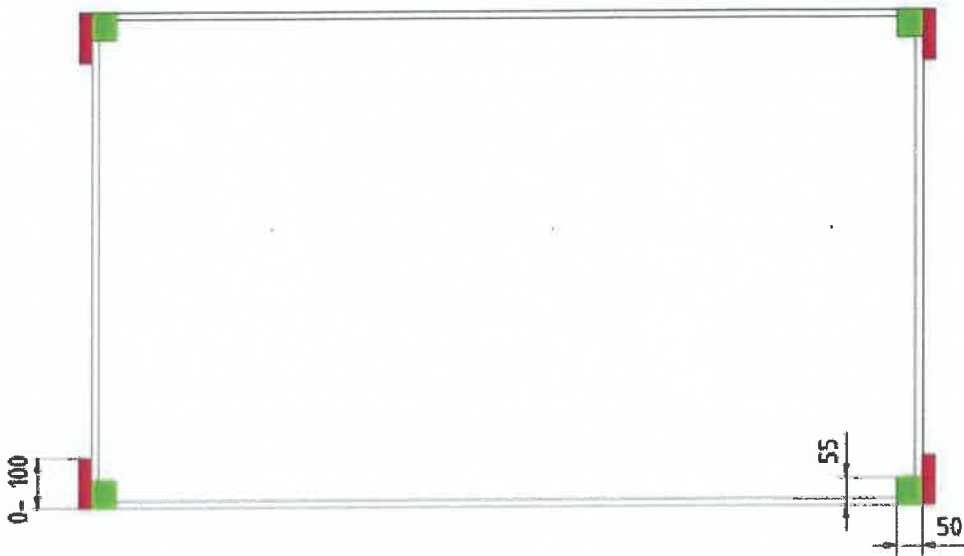
- ▶ The modules are laid at 8 deg tilt on 4 plates of the PEG system located under the corners of the modules
- ▶ The modules are laid in landscape orientation, with the direction of the slope along the module's width
- ▶ The clamps are connected along the short edges of the modules and close to the corners, as shown in the drawings and photos included in this document





Modules Mounting Layout (Top View)



Yingli Energy Development (Tianjin) Co., Ltd.
 英利能源发展有限公司
 3399 North Chaoyang Avenue
 Baoding 071051, China
 中国保定国家高新区朝阳北大街 3399 号 (071051)



	<p>The contact surface of the module clamps on the modules Distance from corner: 100mm Clip length: 70mm</p>
	<p>The contact surface of the modules on the plates</p>



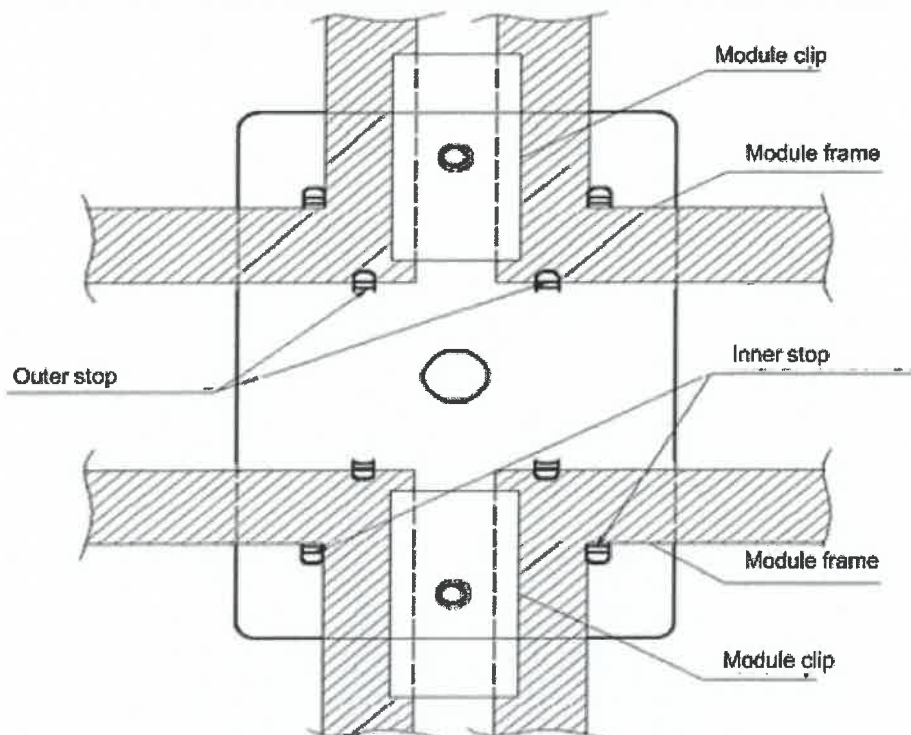
Appendix B
Standard PEG 4 x long side clamping (Landscape orientation)



Module mounting method for JT PEG portrait design

This document describes the **modules mounting method** required on the **portrait design** of the PEG EW and SD system.

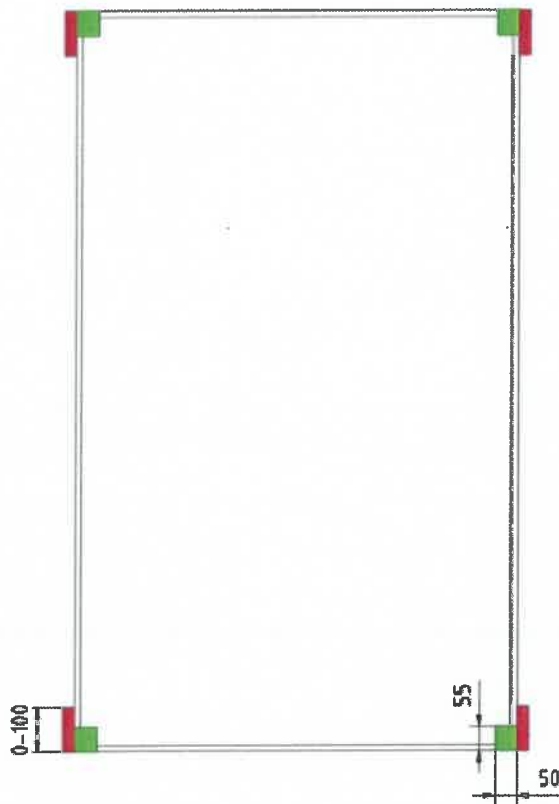
- ▶ The modules are laid at **8 deg tilt** on **4 plates** of the PEG system located **under the corners** of the modules
- ▶ The modules are laid in **portrait orientation**, with the direction of the slope along the module's length
- ▶ The **clamps are connected along the long edges** of the modules and **close to the corners**, as shown in the drawings and photos included in this document





Modules Mounting Layout (Top View)



Yingli Energy Development (Tianjin) Co., Ltd.
 英利能源发展有限公司
 3399 North Chaoyang Avenue
 Baoding 071051, China
 中国保定国家高新区朝阳北大街 3399 号 (071051)



	<p>The contact surface of the module clamps on the modules Distance from corner: 100mm Clip length: 70mm</p>
	<p>The contact surface of the modules on the plates</p>

